

# How to Install Arches

## Follow the Steps Below for outside mounted arches

Step 1. Place arch over window opening being sure that it is centered, and the bottom is at the correct location.

Step 2. Insert screw (see below) at top of arch, into pre-drilled mounting hole making sure not to over tighten.

Step 3. Place a level at the bottom of the arch and ensure that it is properly aligned.

Step 4. Insert remaining screws (supplied).

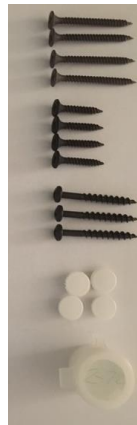
Step 5. Place button caps (supplied) over screw holes and push in as far as possible by hand. Use a small hammer to lightly tap in the rest of the way being careful not to damage the button cap. For Custom colors use supplied touch up paint for cap color.

Step 6. Use a mild window cleaner to remove any fingerprints or dirt. Do not spray directly onto arch or rub hard as this could damage the paint.

## Follow the steps on back side of this sheet for inside mounted arches



**Installation Package**  
Number of Screws and Caps will vary depending on size of arch

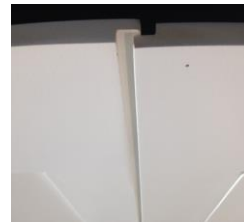


- ← 1 5/8" lg. Sheetrock Screws for Mounting Arch to Sheetrock (om)
- ← 1" lg. Sheetrock Screws for Mounting Arch to Mounting strip (im)
- ← 1 5/8" lg. Flat Head Screws for Mounting Strip to Sheetrock (im)
- ← Screw Caps to cover Mounting Screws
- ← Touch up Paint for Custom Colors (to paint screw caps)

**Installation Package**



**2 Part Non-Movable Assembly**



**2 Part Movable Assembly**